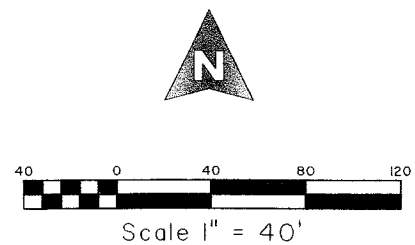


# CASTELLINA

LYING IN SECTION 13, TOWNSHIP 44 SOUTH, RANGE 41 EAST, VILLAGE OF WELLINGTON, PALM BEACH COUNTY, FLORIDA. BEING A REPLAT OF A PORTION OF LANIER PROPERTY AS RECORDED IN PLAT BOOK 108, PAGES 75 THROUGH 91, PUBLIC RECORDS OF PALM BEACH COUNTY, FLORIDA.

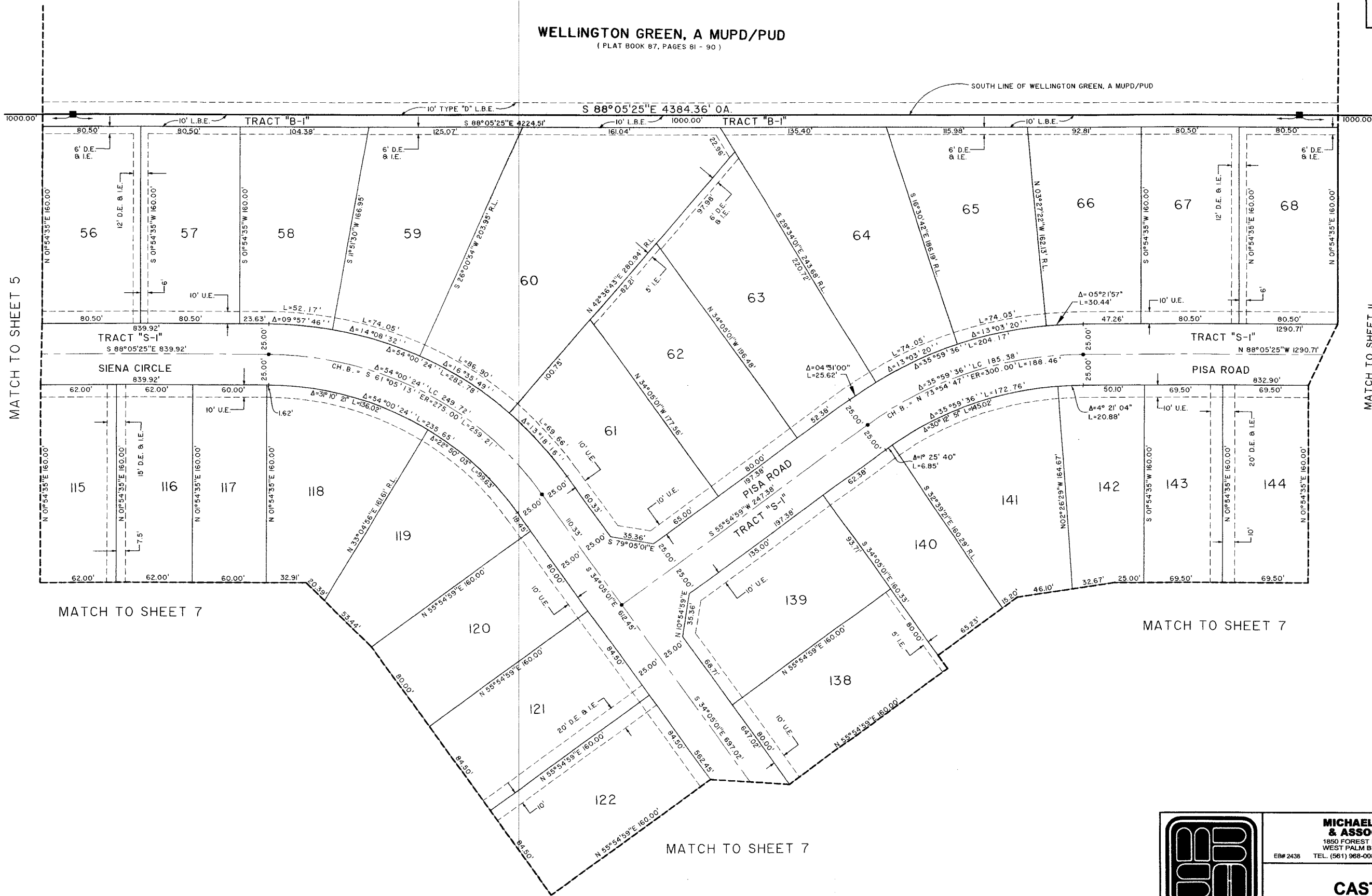
SHEET 6 OF 17 FEBRUARY, 2012



COUNTY OF PALM BEACH )  
STATE OF FLORIDA ) SS  
THIS PLAT WAS FILED FOR RECORD AT \_\_\_\_\_ M. THIS \_\_\_\_\_, 2012, AND DULY RECORDED IN PLAT BOOK NO. \_\_\_\_\_, ON PAGE \_\_\_\_\_ THRU \_\_\_\_\_  
SHARON R. BOCK, CLERK AND COMPTROLLER  
BY: \_\_\_\_\_ D.C.

## WELLINGTON GREEN, A MUPD/PUD

( PLAT BOOK 87, PAGES 81 - 90 )



MATCH TO SHEET 5

MATCH TO SHEET 11

MATCH TO SHEET 7

MATCH TO SHEET 7

MATCH TO SHEET 7

SHEET 6 OF 17



**MICHAEL B. SCHORAH & ASSOCIATES, INC.**  
1850 FOREST HILL BLVD., SUITE 206  
WEST PALM BEACH, FLORIDA 33406  
E9# 2438 TEL. (561) 968-0080 FAX. (561) 642-8726 LB# 2438

### CASTELLINA

Z:\Castellina (158)\350\_PAT.dwg, 2/24/2012 11:12:13 AM, LCB